

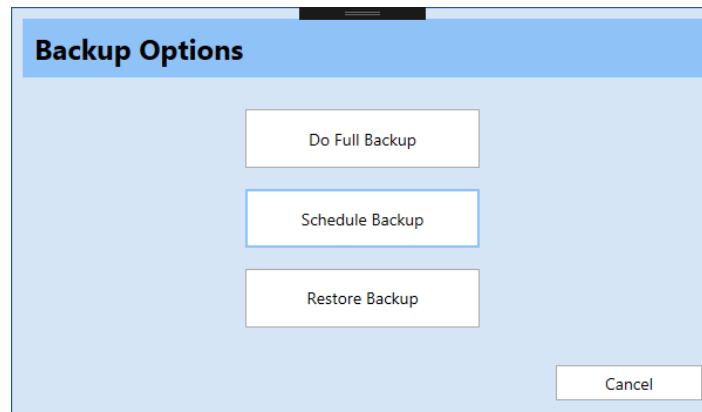
Backup handling
in
Superlock II

Backup Options

Superlock has the functionality to backup and restore all the information that the installation contains.

All the information like lock systems, lock types, configuration data, users, user configurations and more is included into the backup file when the user generates one backup file.

In this screen, the user can choose the operation to perform.

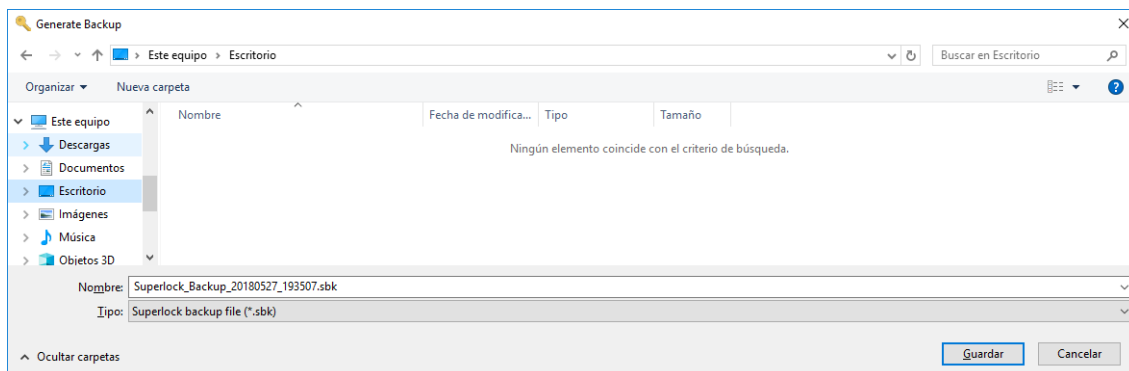


Do Full Backup

This option will start the process to generate a new complete backup file that will contain all the data that the Superlock installation contains.

This is not an incremental backup, so all the information will be included in a new file every time that this option is chosen.

When this option is selected, the program shows a file dialog where it allows the user to set the file name and the location where the new backup file will be stored.



By default, the name of the file is composed of the prefix “Superlock_Backup_” and the suffix is the date and the time when the backup has been generated.

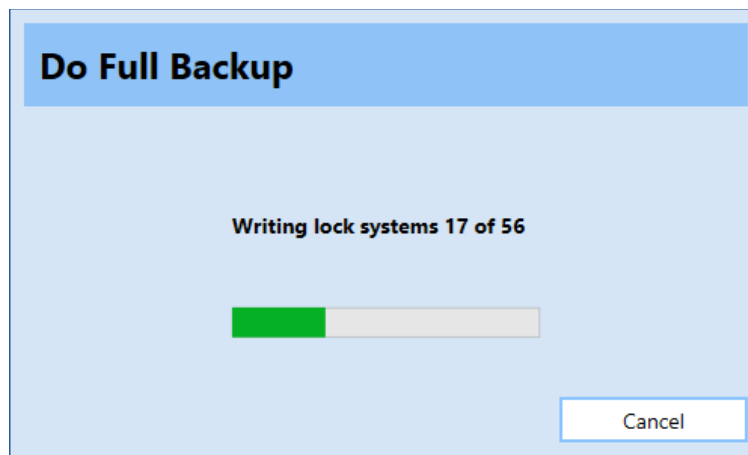
The date and time are specified in the following format:

Year (4 digits) Month (2 digits) Day (2 digits) Hours (2 digits) Minutes (2 digits) and seconds (2 digits).

Using this convention, the file names will be always different and they can be easily sorted by date and time.

When the folder where the file will be stored is selected, the process to backup all the Superlock installation information is started.

An information screen displaying what is currently being backed up is shown to the user.



When the process to generate the new backup file is completed, the program might show a summary report.

This report is only shown when there is some information that has not been able to be included into the backup file for any reason, otherwise, a message explaining that the backup has been completed successfully without any issues is shown to the user.

In both cases, the backup file is generated and it can be used to restore information

Restore Backup

This option will start a process to restore information from a backup file.

As shown above when doing a full backup, when the user selects to restore a backup file, the program will ask the user to specify where the backup file is located, so it can be opened and restored.

In next steps, the user will be able to select between few possibilities when selecting which information to restore.

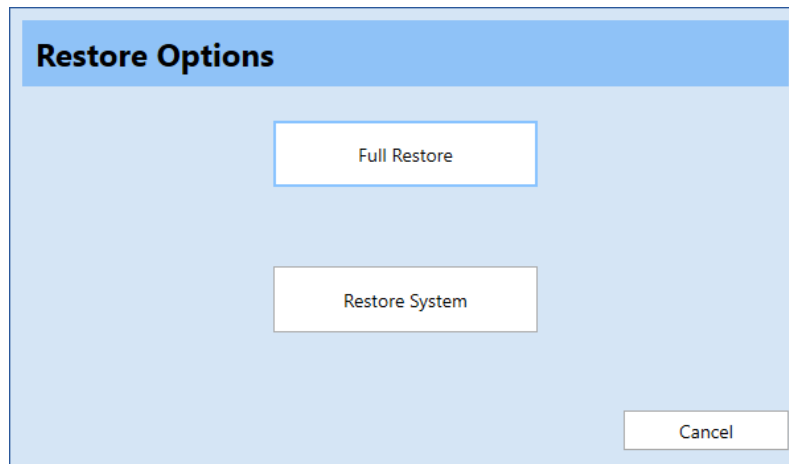
Cancel

This button will cancel the process to do or restore a backup and it will close the screen.

Restore Options

This screen is shown when the user wants to start a restore process.

The restore can be complete or partial as will be described below.



Full Restore

This option is used for restoring all the information that was backed up from the Superlock installation when the Full Backup option was used.

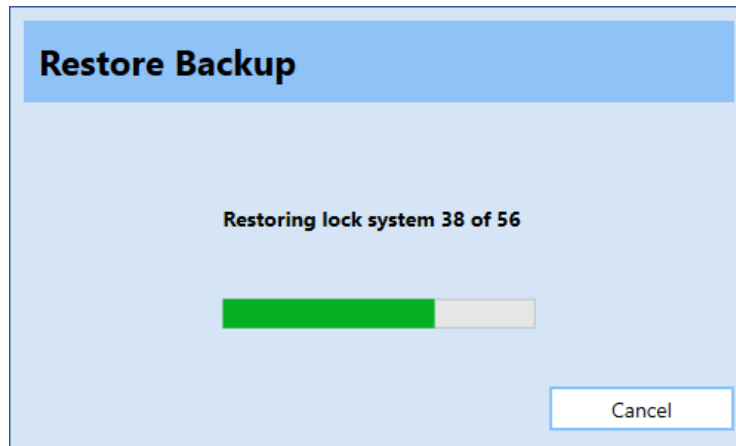
So, not only lock systems, but lock types, users, configuration, user configuration and more will be restored.

This option requires that the Superlock installation is empty, so it is a fresh installation.

In case the Superlock installation is not a completely new installation and it contains data when this full restore options is selected, the program will show a message informing about this situation and the process will be automatically canceled.

If this is the case, it is required to use a new installation of Superlock to restore all this information.

If the installation is empty and the full restore process can be performed, the program will present a screen informing about the process and which information is currently restoring.



When the process to fully restore a backup file is completed, the program will maybe show a summary report.

This report is only shown when there is some information that has not been able to be restored into the installation for any reason, otherwise, a message explaining that the restore process has been completed successfully without any issues, is shown to the user.

After doing a full restore of the installation, the program will inform the user that the program will be terminated. After this the user can run the Superlock again, and the full installation will be in the same state as it was when the backup file used to restore was generated.

Restore System

This option is used for restoring one single system that is contained in a backup file.

The rest of the information will not be restored.

In order to restore one single system, it is not necessary that the Superlock installation is empty, as it is when performing a full restore.

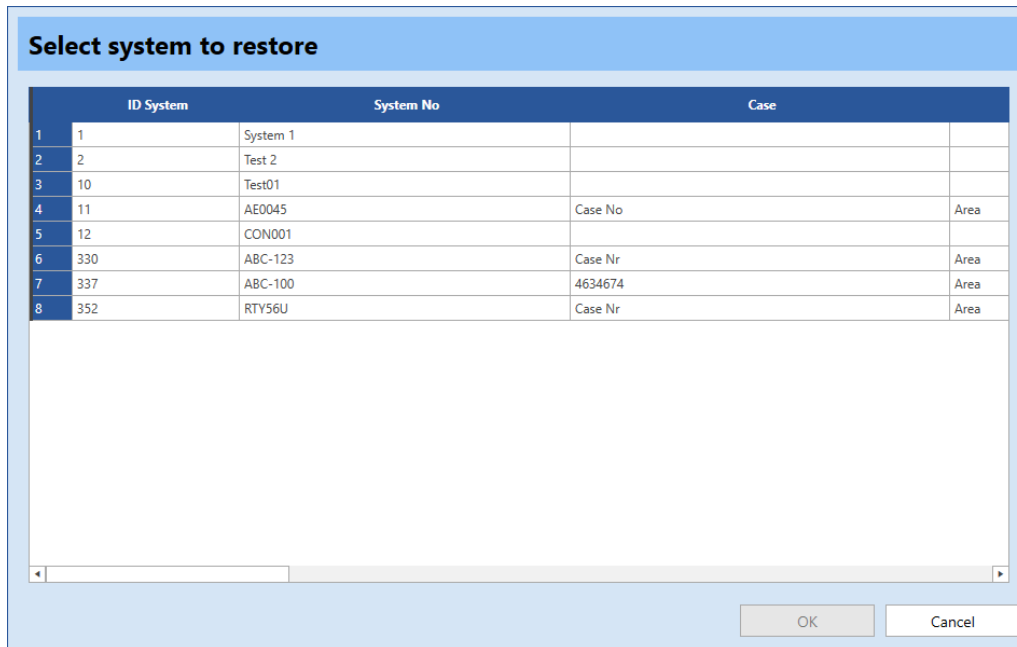
When this option is selected, the program will present to the user some screens to allow to select the system to be restored.

Cancel

This option will cancel the restore process and will return to the program.

Restore System

This screen permits the user to select which one of the systems contained in the backup file, will be restored.



	ID System	System No	Case	
1	1	System 1		
2	2	Test 2		
3	10	Test01		
4	11	AE0045	Case No	Area
5	12	CON001		
6	330	ABC-123	Case Nr	Area
7	337	ABC-100	4634674	Area
8	352	RTV56U	Case Nr	Area

A list similar to the System list is presented to the user so he can select one and only one of the systems.

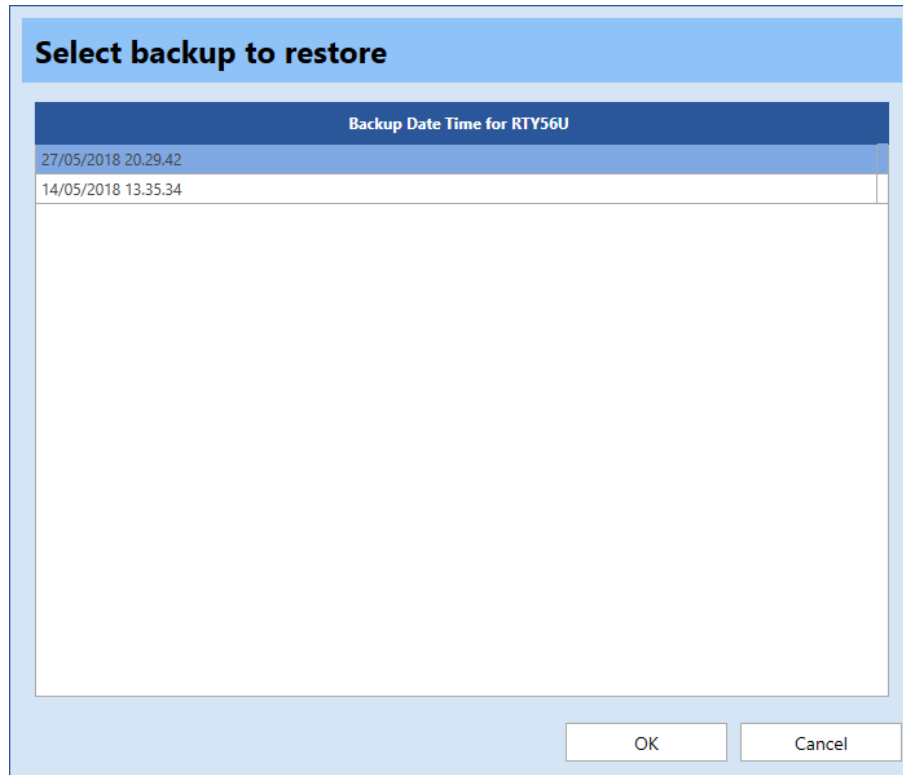
The user has the chance to cancel this process by clicking the cancel button or select one of the systems double-clicking on the list or selecting the specific system and clicking on the OK button.

If a system is selected, the user will have the option to select one of the versions that of the same system that the backup stored.

Select Backup to Restore

This screen is shown to the user when a single system will be restored to the database.

After selecting which system will be restored, the program prompts the user to decide which version of the system that should be restored.



This screen presents a list of dates and times when the system was changed, so it is possible to decide in which state the system will be restored.

This list is always sorted from newer to older, so newer backup versions of the system are located in the top of the list.

The user can cancel the process by clicking on the Cancel button.

If the user selects one version of the system to restore by double-clicking on one of the lines or by clicking on the OK button, the process to restore this specific version of the system will start.

If the system can be restored successfully, a message informing about this will be shown to the user.

In the same way, if there is any error while restoring the system, the program will show the error that occurred.

Please note that, when restoring one specific system, the system is not saved to the database in the restoring process, instead, it is opened as in the program like it was a new system,


allowing the user to close it saving or not saving to the database after browsing the system data.

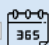
Scheduled Full Backup


The user customize scheduled backups from the client side.

For example do full backup on each Friday at 03:00 using the following panel:

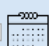
Backup Scheduler

 **Specific Date**

 **Daily**

 **Weekly**

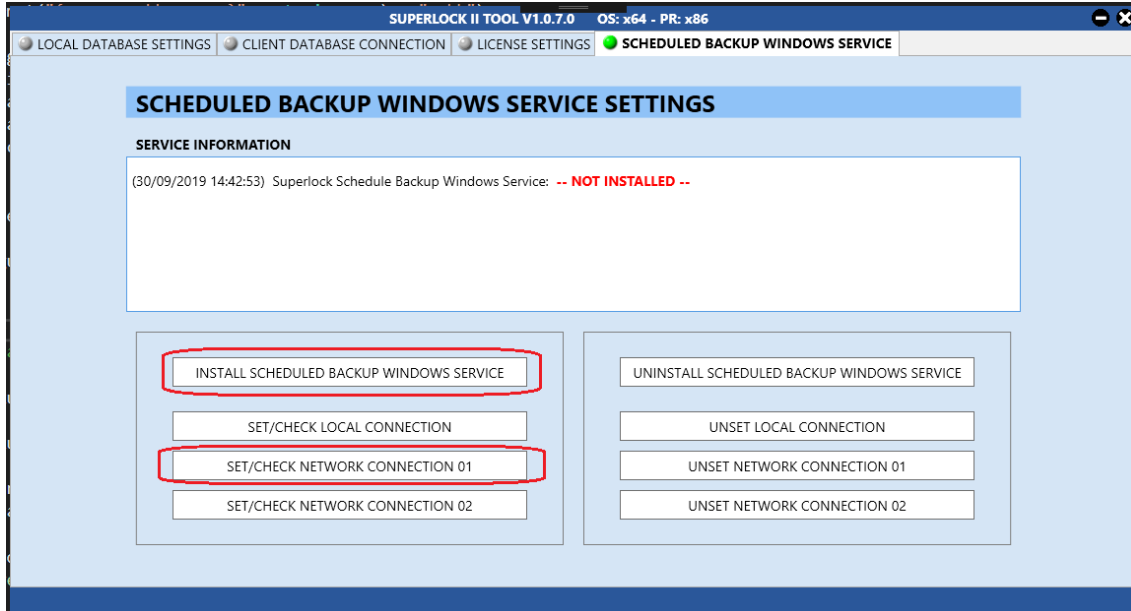
Sunday **Monday** **Tuesday** **Wednes...** **Thursday** **Friday** **Saturday**

 **Monthly**

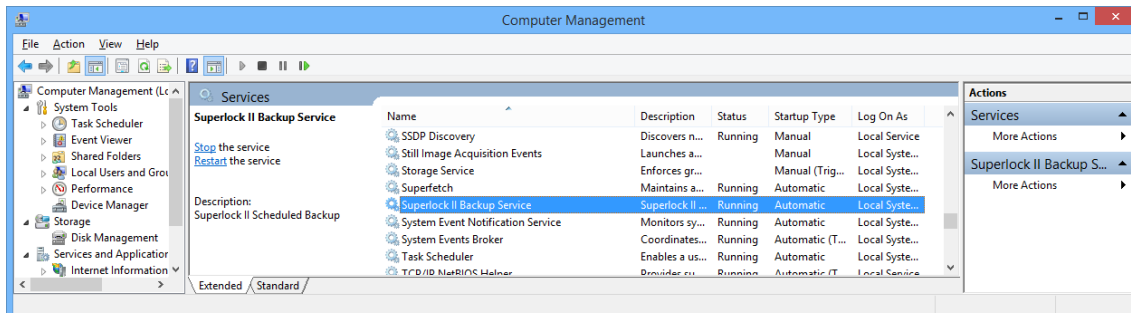
1	2	3	4	5	6	7
8	9	10	11	12	13	14
15	16	17	18	19	20	21
22	23	24	25	26	27	28
29	30	31				

On the assigned backup server machine we run the SuperlockTool application following this steps:

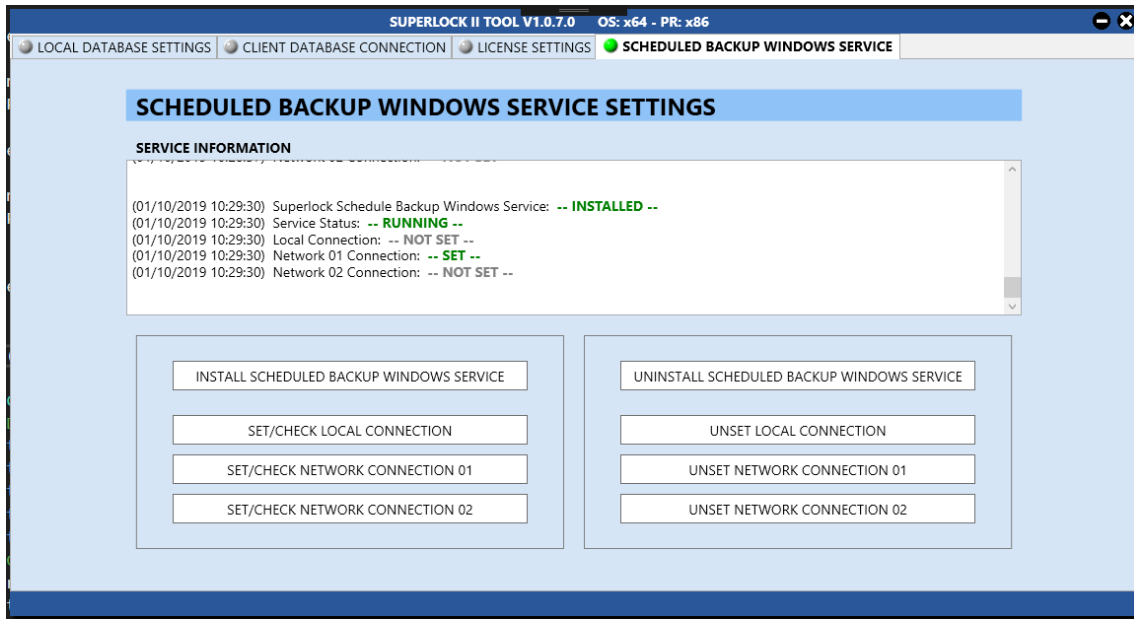
- Set a connection for the backup windows service
- Install the windows service



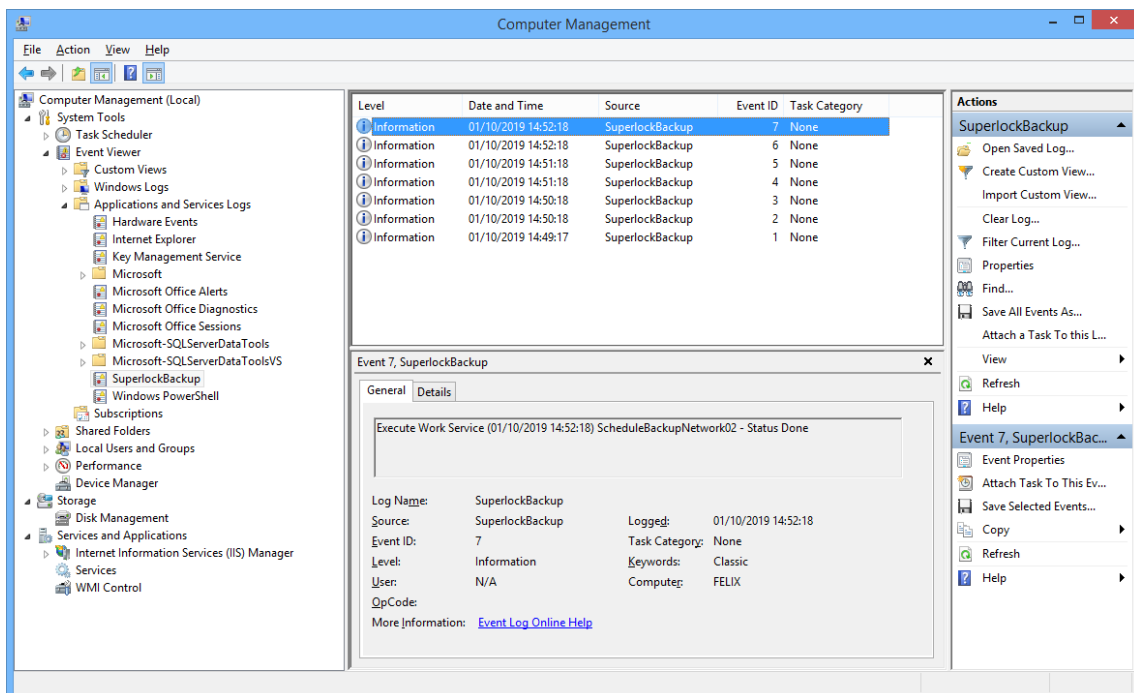
On the windows console service we can check our new windows service is up and running



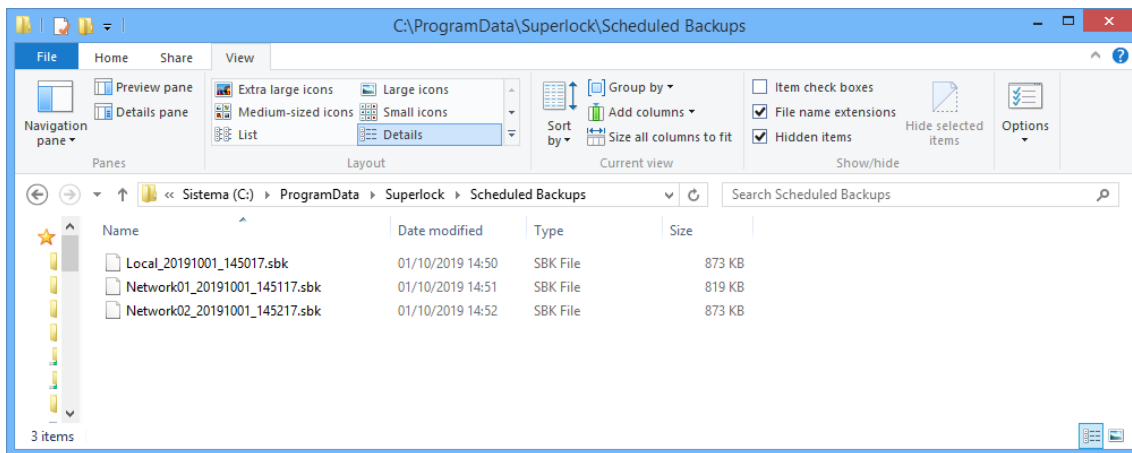
Either on the SuperlockTool we can check and modify the windows service



On the windows log viewer we can check the logs of the backups scheduled tasks



Finally on the system folder %ProgramData% we can find the full backup files:

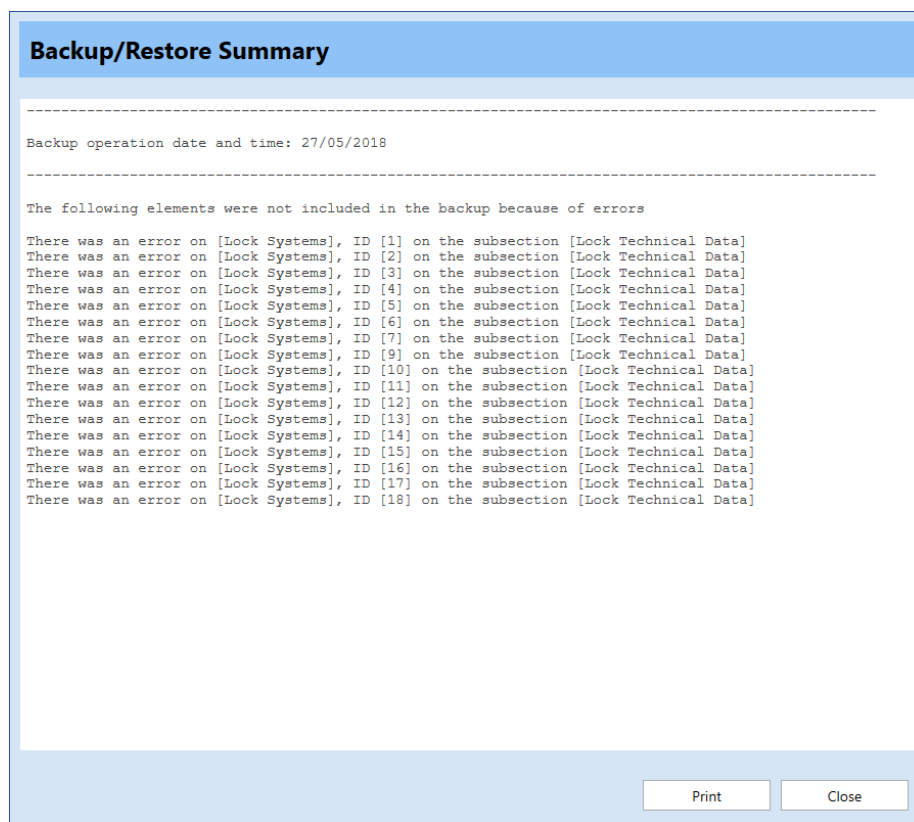


Backup/Restore Summary

This screen shows the user the issues occurred during the performing of a full backup or a full restore process.

The backup operation is completed anyway, so most of the information will be backed up from the database or restored to the database, but some pieces of this information, for some reason, were not backed up or restored.

It is possible to see in this list which information was not possible to process. This information can be useful to check these pieces of information and detect why they were not correctly processed.



Print

This option will allow the end user to print out this information

Please note that a PDF printer can be used, so it is not necessary to print on paper.

Close

This option will close the screen and return to the program.